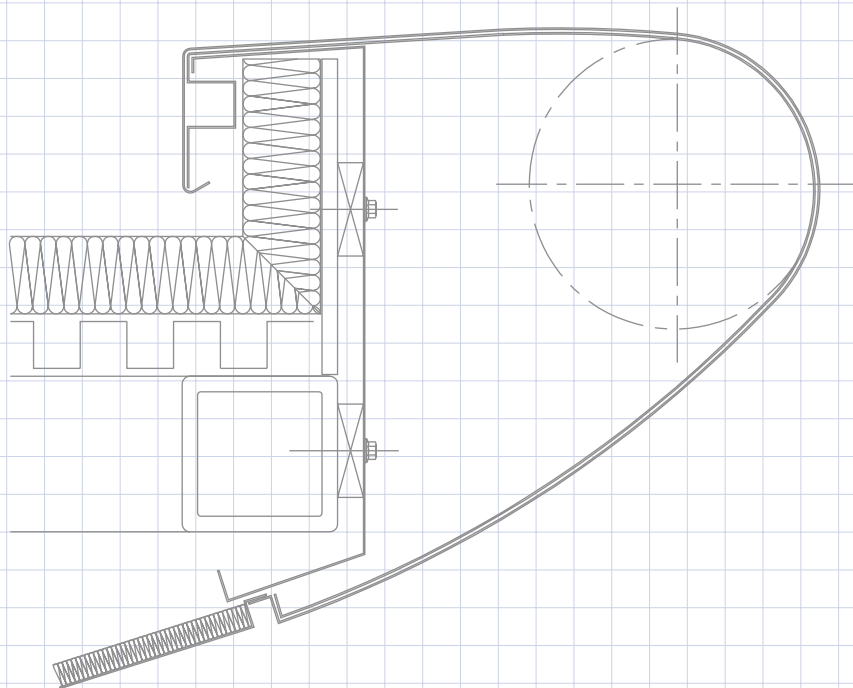
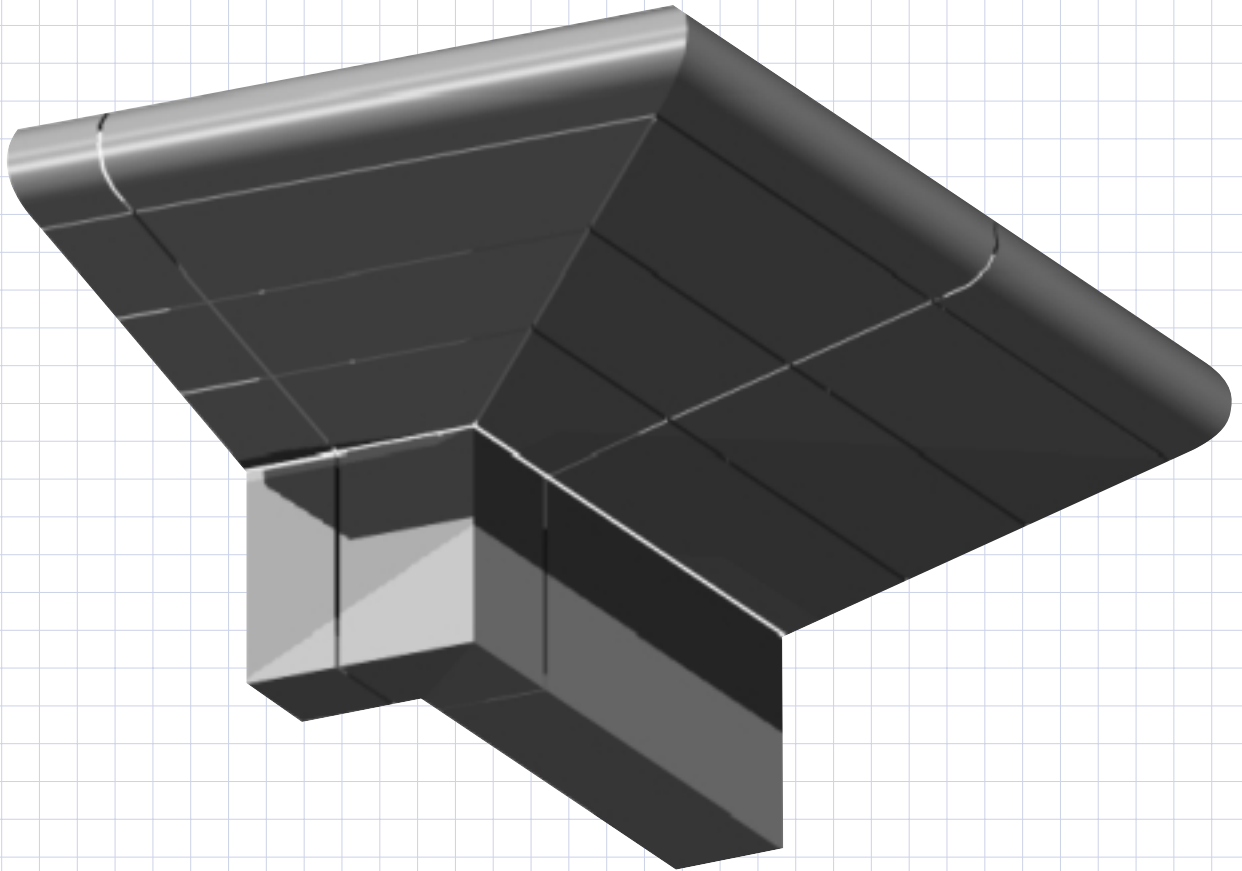


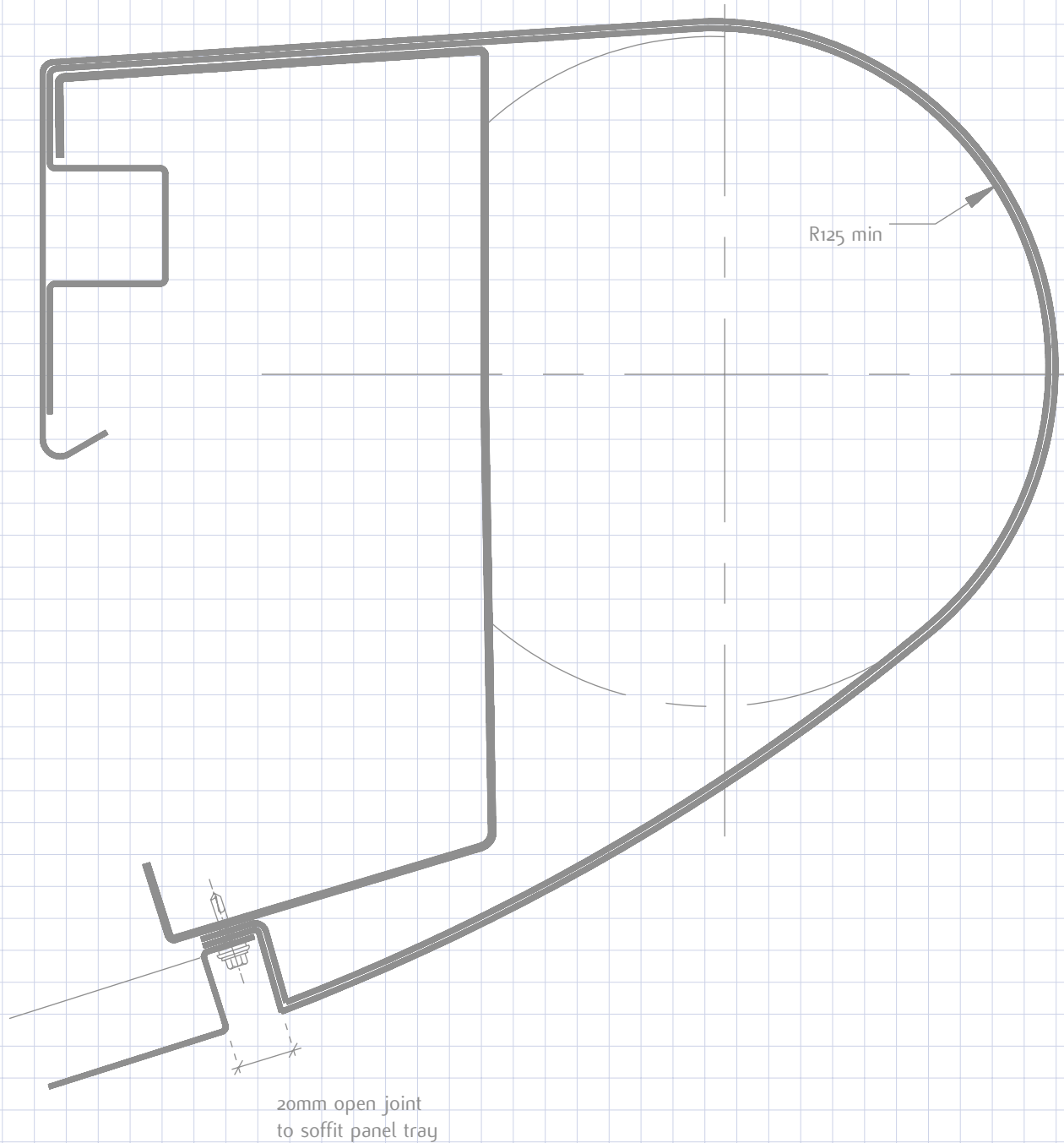


EDM Products do not have a standard aerofoil shape or size. We work with the Architect to create a detail in both scale and shape which compliments the overall building design. The wide range of metals along with pre-coating or post coating finishes can offer a solution to any project budget. The soffit panels can be fabricated in the same sheet metal material or as a bonded composite panel in modules to integrate with the aerofoil joints.



A wide range of complex aerofoil shapes can be formed in polyester powder coated or pre-coated aluminium. The aerofoil coping can also be manufactured in stainless steel, zinc, copper, etc. complete with it's own set-out Bracket and Support system. The soffit panel can be manufactured in matching metal finished in single tray or as a bonded panel for panel flatness and greater spanning between supports.

The aerofoil section shall be manufactured with integral butt straps.  
 The aerofoil shall be supported on 2mm galvanised adjustable brackets which can be truly aligned off the structural steelwork.  
 The aerofoil shall be formed from mill finished aluminium and finished in a polyester powder paint to the selected RAL colour.  
 Aerofoil edging have a min radius of 125mm. please contact our Technical Department reference aerofoil shapes, min/max radius dim's.



**Typical Specification (A)**

The soffit panels shall be manufactured from 0.9mm thickness PVF2 coated aluminium skins fully bonded to an extra high density insulation core.

The panels shall be fixed onto the secondary steelwork supports by means of an extruded aluminium pressure plate with a 20mm wide black EPDM gasket seal from the Spanwall Panel System.

**Typical Specification (B)**

The soffit panels shall be manufactured from 3mm thickness mill finished aluminium fully formed on all four sides.

The panels shall be fixed onto the secondary steelwork supports by means of self drilling, self tapping stainless steel screws in the 20mm open shadowline joint.

The panels shall be finished in a polyester powder paint to the selected RAL colour.

