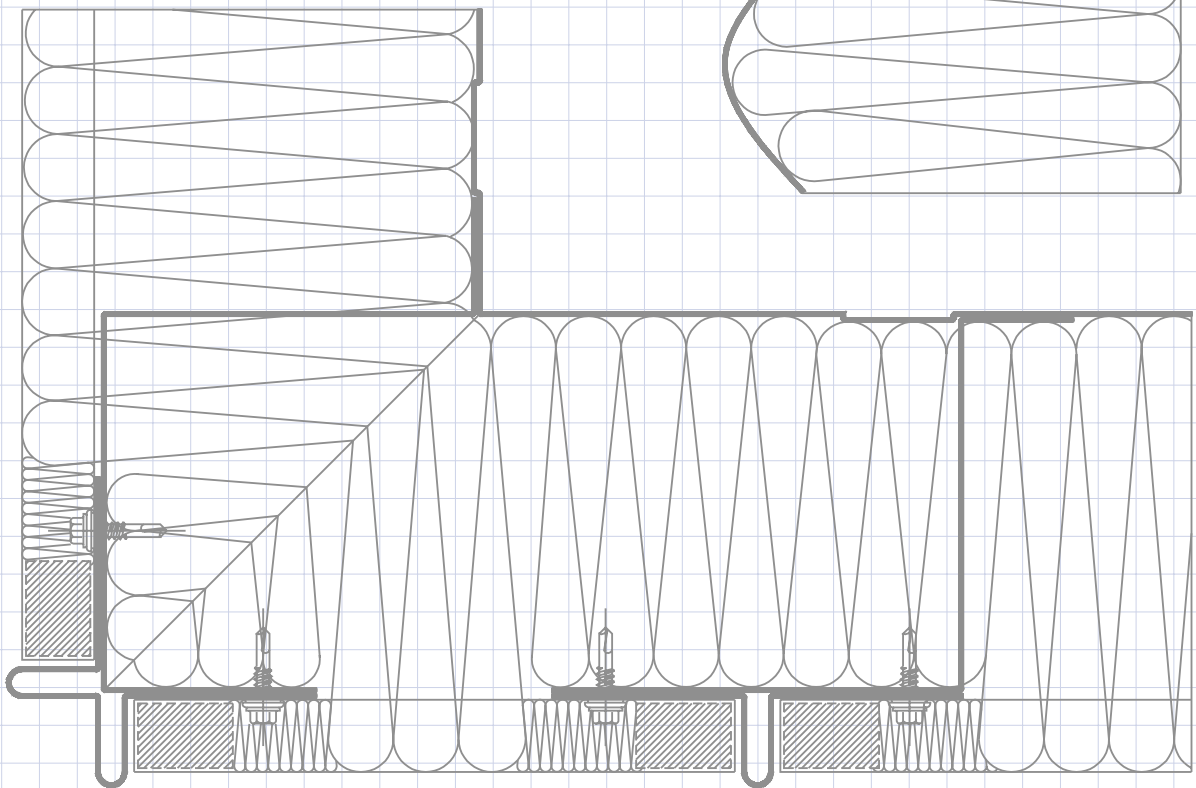
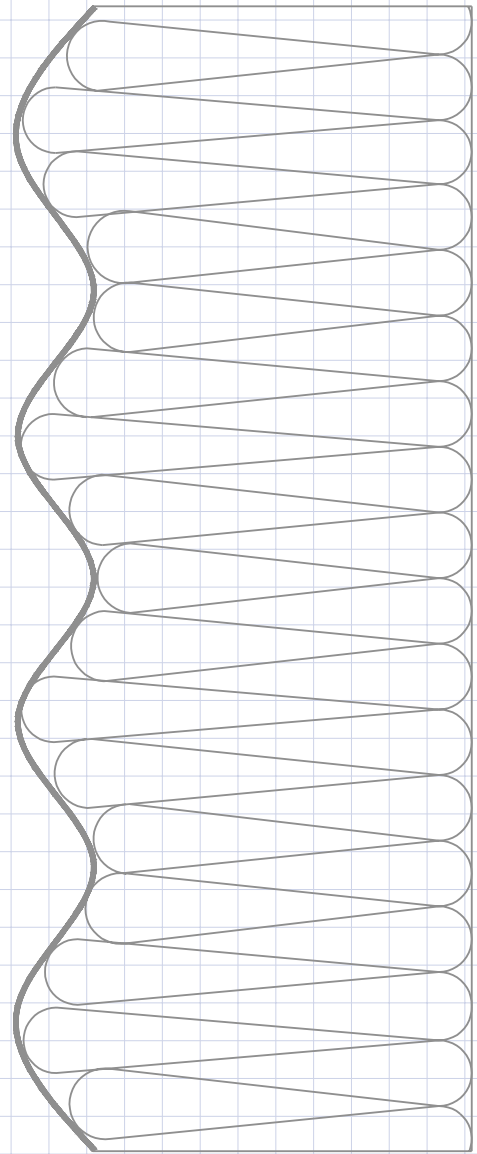




EDM can supply a range of single skin profiled metal sheeting in steel or aluminium. Manufactured on our own equipment or in liaison with affiliated suppliers EDM can supply from deep profiled structural decks and structural wall trays to very light gauge sinusoidal and trapezoidal outer sheets.

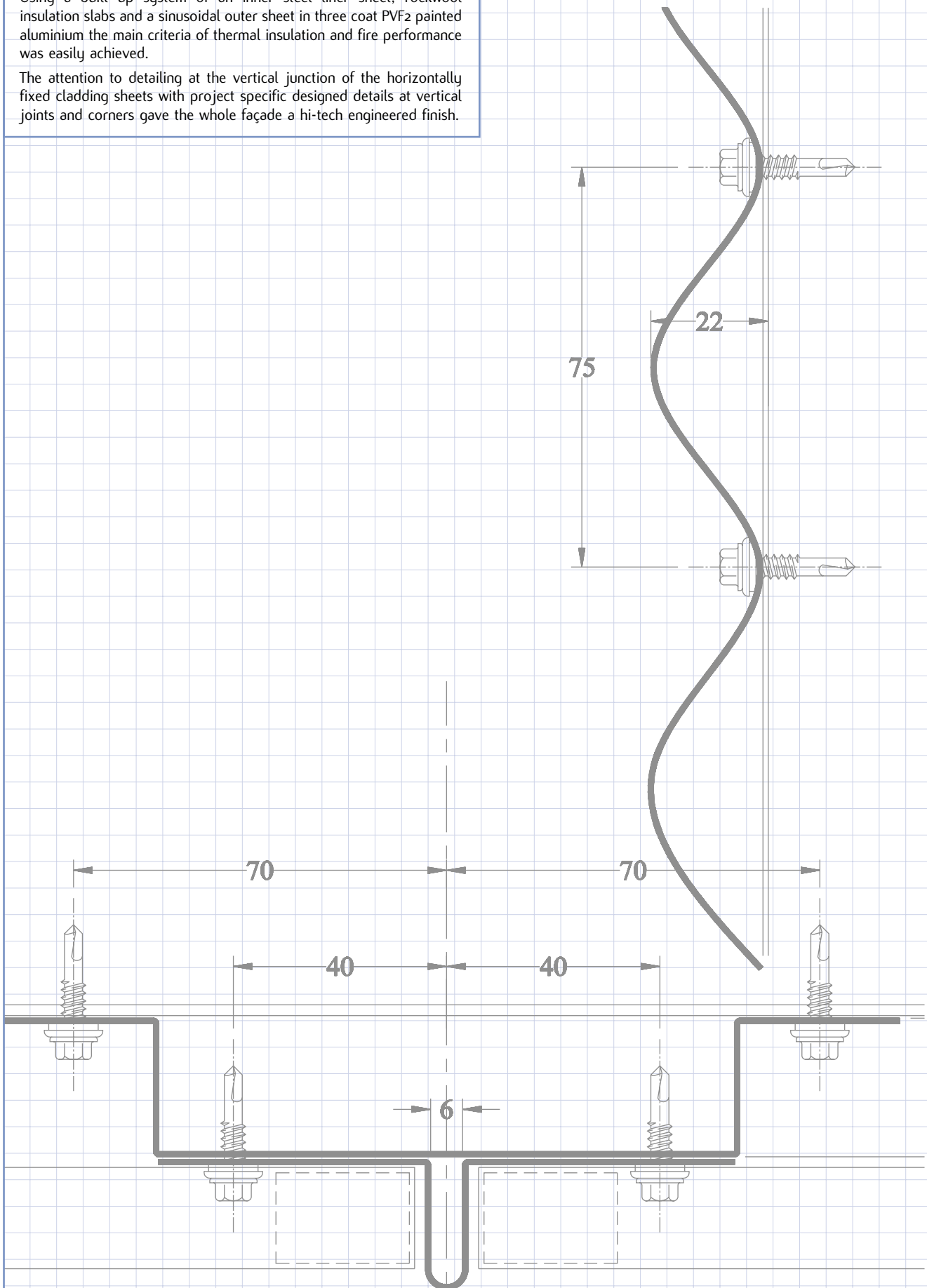
By the use of careful and inventive detailing of the flashings and closure pieces a striking façade can be created at relatively low cost.

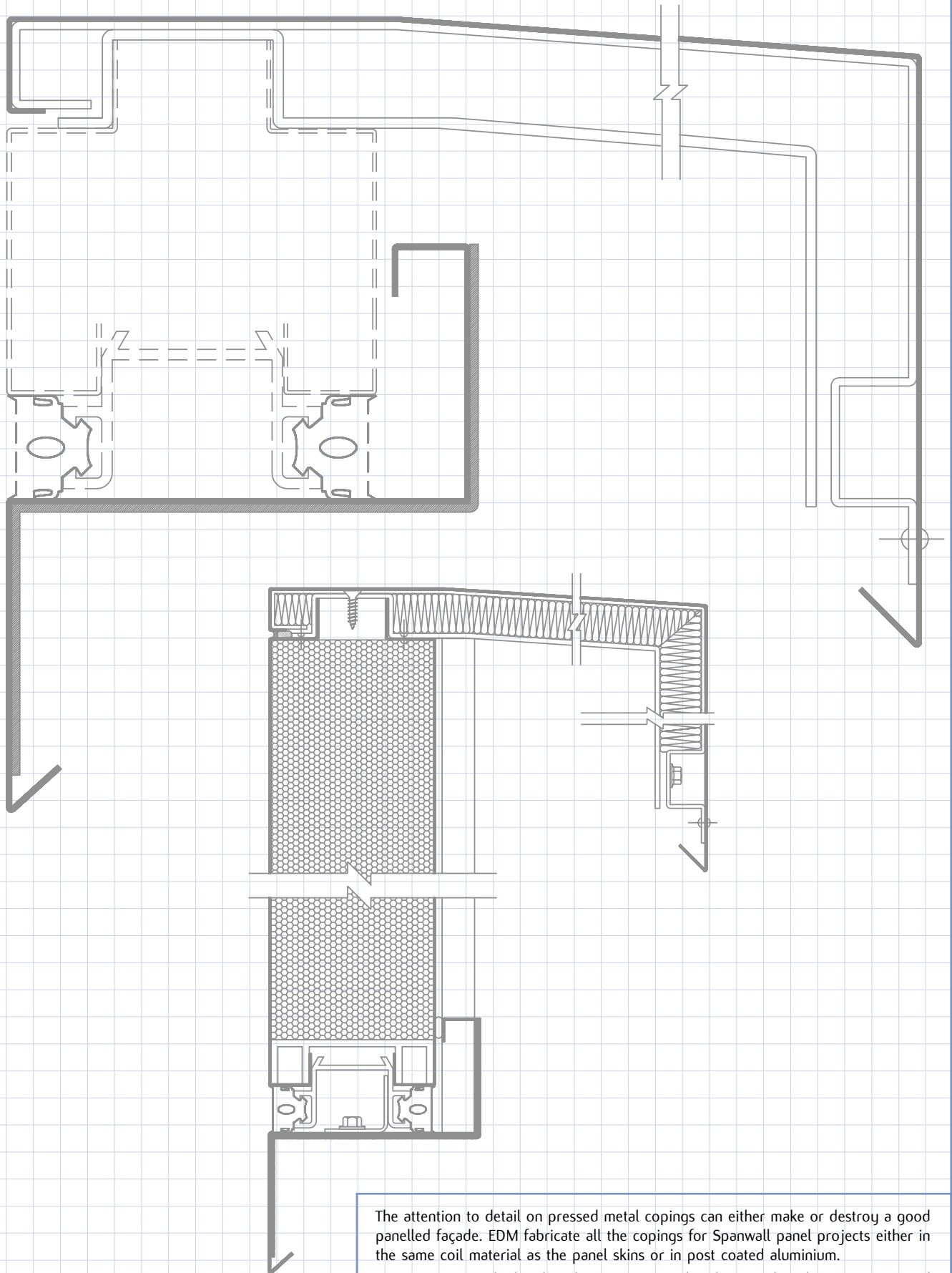


The standard sinusoidal wave form cladding sheet was used to great effect on the new terminal building for Belfast City Airport.

Using a built up system of an inner steel liner sheet, rockwool insulation slabs and a sinusoidal outer sheet in three coat PVF2 painted aluminium the main criteria of thermal insulation and fire performance was easily achieved.

The attention to detailing at the vertical junction of the horizontally fixed cladding sheets with project specific designed details at vertical joints and corners gave the whole façade a hi-tech engineered finish.





The attention to detail on pressed metal copings can either make or destroy a good panelled façade. EDM fabricate all the copings for Spanwall panel projects either in the same coil material as the panel skins or in post coated aluminium.

Copings are supplied in lengths to correspond with vertical gasket joints to avoid run off smears on panel faces.

Cills are also made in the same materials and lengths to complete the continuity of the panel façade layout.

